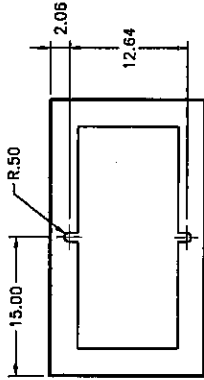


**SPECIFICATIONS--PART #FCU102779
(M49)**



MOUNTING PATTERN

MATERIAL--

SHEET ALUMINUM, .125" THICKNESS, ALLOY 5052. SURFACE SHALL HAVE A SMOOTH, NATURAL ALUMINUM MILL FINISH.

DOORS & LOCKS--

THE MAIN DOOR IS OF NEMA TYPE 3R CONSTRUCTION WITH CELLULAR NEOPRENE GASKET, WHICH IS RAIN TIGHT. HINGE IS CONTINUOUS 14 GAUGE STAINLESS STEEL AND IS SECURED WITH 1/4-20 STAINLESS STEEL CARRIAGE BOLTS. STANDARD EQUIPMENT INCLUDES A THREE-POINT LOCKING SYSTEM WHICH SECURES THE DOOR AT THE TOP, BOTTOM AND CENTER. A CORBIN LOCK WITH TWO KEYS IS ALSO FURNISHED. THE MAIN DOOR IS ALSO EQUIPPED WITH A TWO POSITION DOOR STOP, ONE AT 90° AND ONE AT 120°. DOOR LOCKING RODS ARE 1/4" X 3/4" ALUMINUM TURNED EDGEWAYS WITH 1" NYLON ROLLERS. MAIN DOOR HANDLE IS CAST ALUMINUM.

A POLICE DOOR IS PROVIDED IN THE UPPER HALF OF THE MAIN DOOR AND ENCOMPASSES THE FULL AREA OF THE POLICE PANEL. THE STANDARD DIMENSIONS OF THE PANEL ARE 7-1/2" HIGH, 12" WIDE AND 2-1/2" DEEP AND IS LOCATED DIRECTLY BEHIND THE POLICE DOOR. A SKELETON LOCK BY CORBIN IS FURNISHED FOR THE POLICE DOOR UNLESS OTHERWISE SPECIFIED.

SHELVES--

TWO FULL WIDTH ADJUSTABLE SHELVES ARE FURNISHED WITH EACH CABINET. SHELVES ARE ADJUSTABLE THE FULL HEIGHT OF THE CABINET AND EACH SHELF IS 11" DEEP.

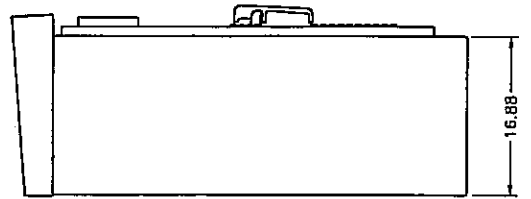
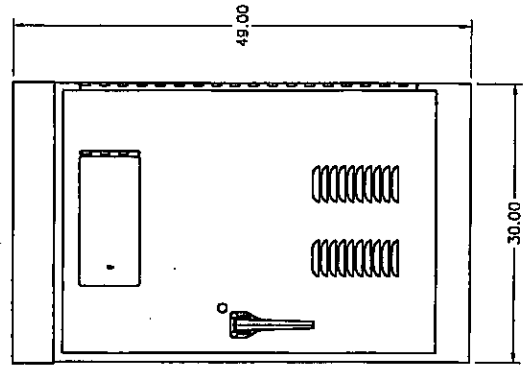
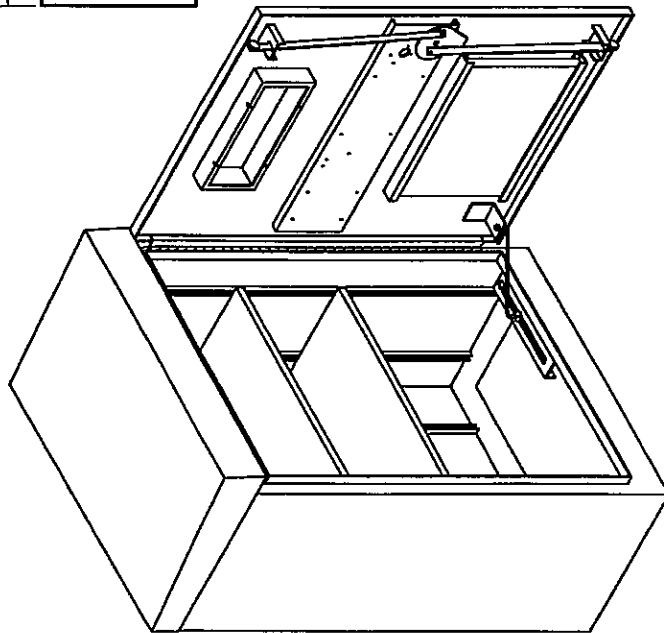
STRUTS FOR MOUNTING SHELVES ARE WELDED IN PLACE.

MOUNTING--

CABINET IS BASE MOUNTED AND EQUIPPED WITH INSIDE FLANGES AT THE FRONT AND BACK, RIGHT AND LEFT FOR ANCHORING TO A BASE.

VENTILATION--

A VENT PATTERN IS PROVIDED ON THE UNDERSIDE OF THE COVER OVERHANG AND LOUVER SLOTS ARE FORMED IN THE LOWER PORTION OF THE MAIN DOOR. THIS CREATES A NATURAL MOVEMENT OF AIR AND HAS A COOLING EFFECT ON THE ELECTRICAL EQUIPMENT. IF SPECIFICATIONS CALL FOR FAN-FORCED AIR, PROVISIONS ARE MADE TO ACCOMMODATE THE FANS, THE EXHAUST AND THE INTAKE, WHICH IS RAIN TIGHT AND WILL NOT DRAIN WATER INTO THE CABINET.



Manufactured by:

CALIFORNIA CHASSIS, INC.

3356 E. LA PALMA AVENUE
ANAHEIM, CALIFORNIA 92806
(714) 666-8511
FAX (714) 666-8509